



Helene Knott

#HK-PC1

&
Dancing Cats Designs
presents

Pieceful Cats

Block #1



View A - Paper Pieced Tail

View B - Bias Applique Tail



Each block finishes at 8" x 13" w/o borders

This is block #1 of a series of cat block patterns that can be made as standalone small wall quilts or assembled into a larger quilt design. Each block will feature a cat that is primarily pieced with some simple applique features.

Skill Level: Confident Beginner

*This block is composed of two foundation pieced sub-units that are assembled to make the final block. the piecing skills required are basic
Follow directions carefully*



Helene Knott

helene.m.knott@gmail.com
PO Box 261 • Oregon City • OR 97045
503 631-8806 www.heleneknott.com

Pieceful Cats

Block #1 - Instructions

This simple pieced cat pattern has two variations for the kitty's bum. One version is completely foundation pieced featuring a pieced tail curving around his little tush while the second variation has a stylized tail created with $\frac{1}{2}$ " bias tape made ahead of time and then appliqued over the backside of the kitty. This pattern includes both options - choose the one you prefer.

The basic pattern is foundation paper pieced, if you are not familiar with that process and are eager to learn it, there are many tutorials online. If you prefer a more classic approach, the pieces from each unit could be made into individual templates and pieced in a traditional way, just remember to add $\frac{1}{4}$ " to all the edges on templates for seam allowances.

Assemble each unit - upper body and hind quarters, sewing them together where indicated on each block. Sew additional strips of background fabric to the hind side, top and bottom to make a block that measures $13\frac{1}{2}$ wide x $8\frac{1}{2}$ " tall.

To Foundation Piece: transfer the front and hindquarters onto tracing or foundation piecing paper including the numbers. The pieces have also been coded to identify if the piece is the background, body or tail of the cat. Remember to reverse the pattern if you want it oriented as shown in the sample and proceed with piecing each unit in the sequence specified by the numbers. Remember to add a final $\frac{1}{4}$ " seam allowance to the perimeter of each unit.

If you prefer traditional piecing methods: use the pattern to make templates for each individual piece adding $\frac{1}{4}$ " seam allowances to all edges of the templates and piece them together in the same numerical sequence. For traditional piecing where you can press seams in any direction, press the seams towards the body of the cat and away from the background and then towards the tail when you reach that part of the piecing sequence. This will enhance the dimension of the cat ever so slightly.

To Finish the Block: sew the two units together along the seam indicated on the master pattern and press that seam towards the front part of the cat. Remove the paper if you foundation pieced the blocks. Cut a strip of background fabric measuring $1\frac{1}{2}$ " x $6\frac{1}{2}$ " and sew it to the hindquarter side of the block, press the seam towards to edge of the block. Cut two strips from the background fabric measuring $1\frac{1}{2}$ " x $13\frac{1}{2}$ " each and sew to the top and bottom of the block. pressing these seams to the perimeter of the block as well.

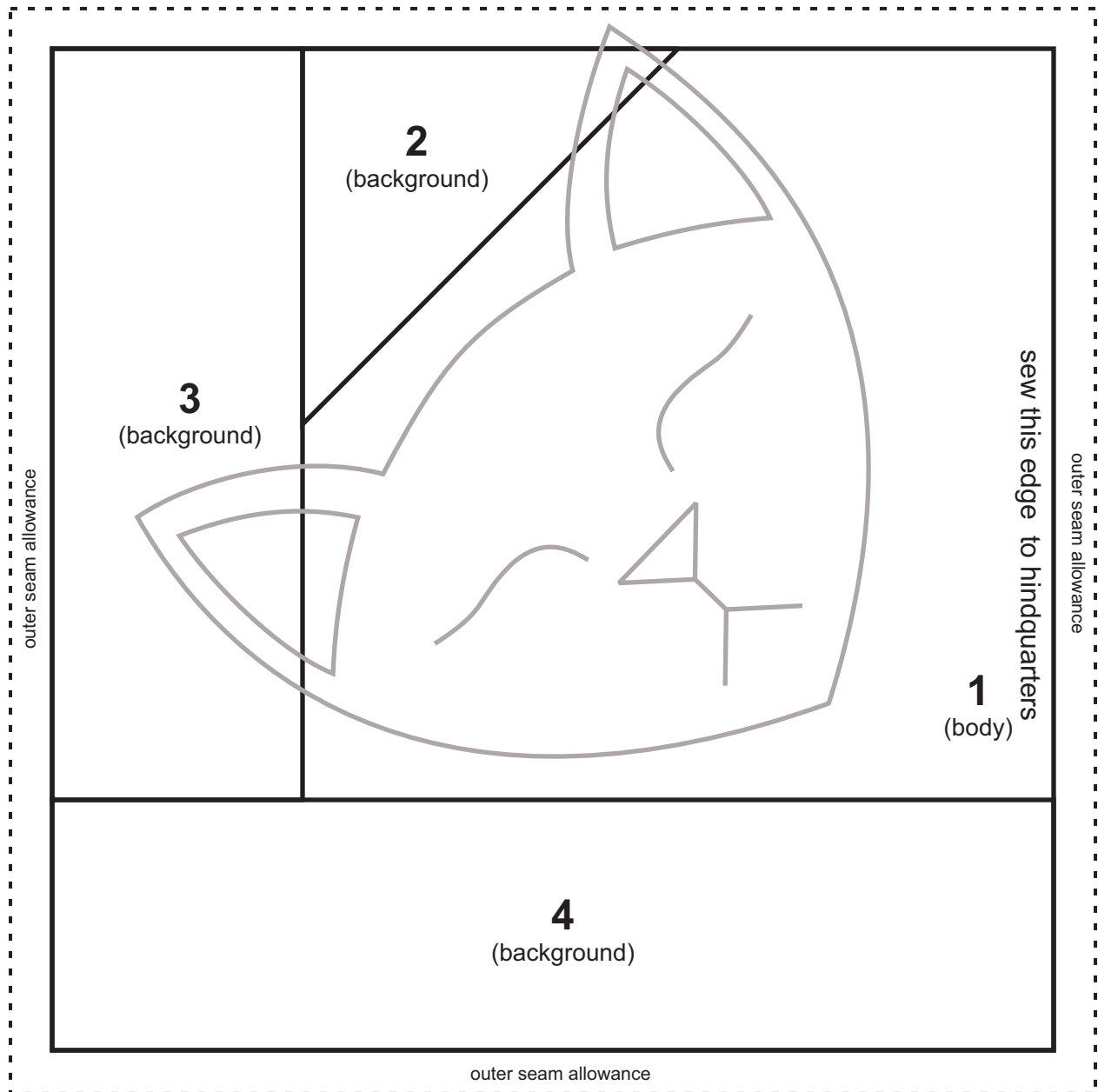
Finishing Applique: The cat's head can be hand appliqued or fused according to your preference; position it as shown in light gray on the master pattern. For hand applique remember to add a turning allowance to the pieces. For the appliqued bias tail on version B make about 18" of $\frac{1}{2}$ " bias tape using a Clover bias tape tool as per the manufacturer's instructions. Apply it to the hind quarters by hand, machine or fusing following the curve as shown on the master pattern and tucking under the raw edges at either end. the actual length of bias tape for the tail will vary depending on how you position and stitch it but will be about 15" long.

The cat's eyes and mouth can be added with embroidery or free motion quilting and the nose with applique or embroidery. The inner ears will be appliqued in place. This finishes the basic block. You can make just one and add borders if you wish or make multiple blocks for a larger quilt.

If making multiple blocks for a larger quilt, you can reverse the orientation on some of them if desired.

Pieceful Cat #1 Upper Body

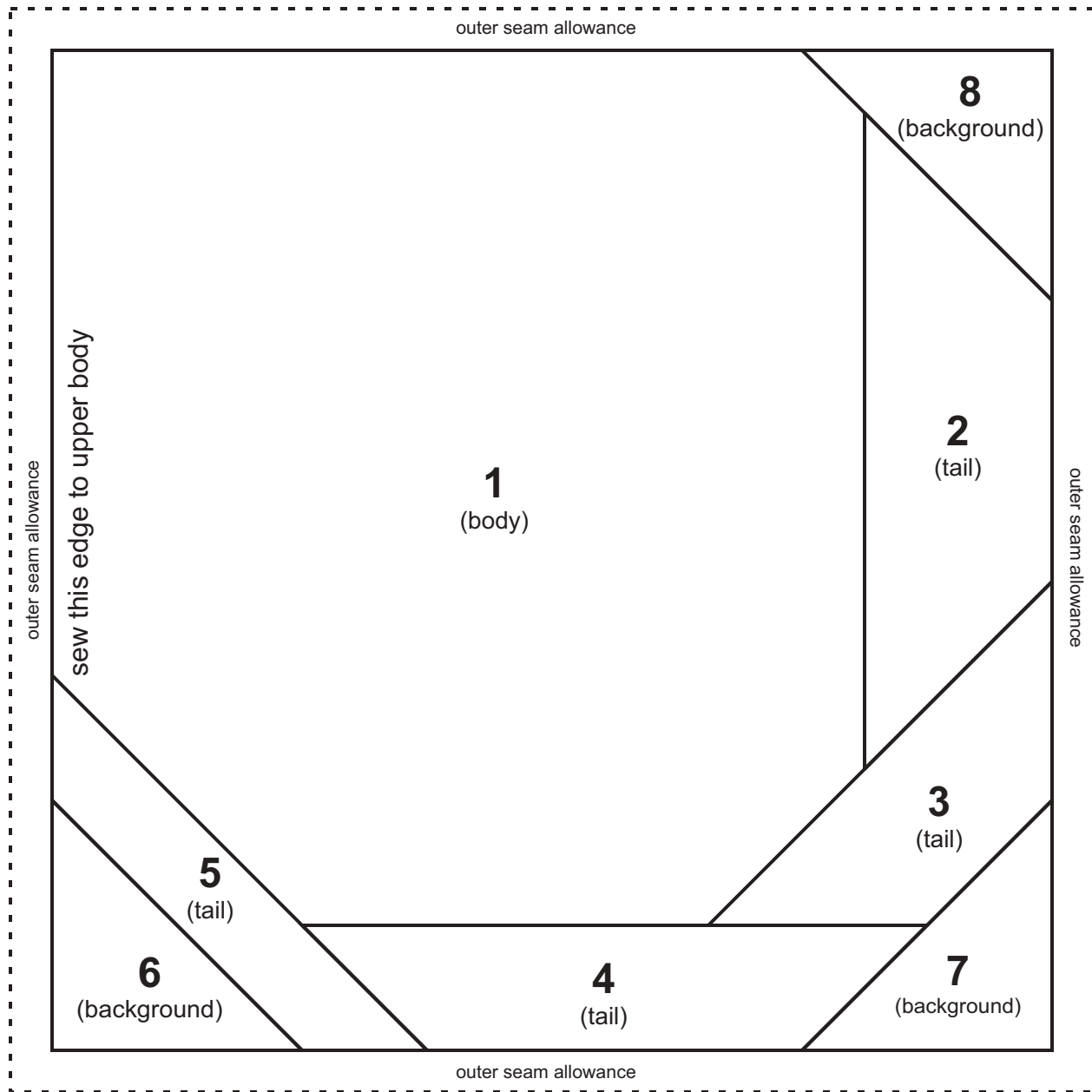
6" unit



TIPS: Make sure there is adequate contrast between the body and the background. Cut and orient the background pieces carefully if it is a directional print. Also make sure there is adequate contrast between the head and body fabrics so the head remains visible in the finished block.

Pieceful Cat #1A Hind Quarters

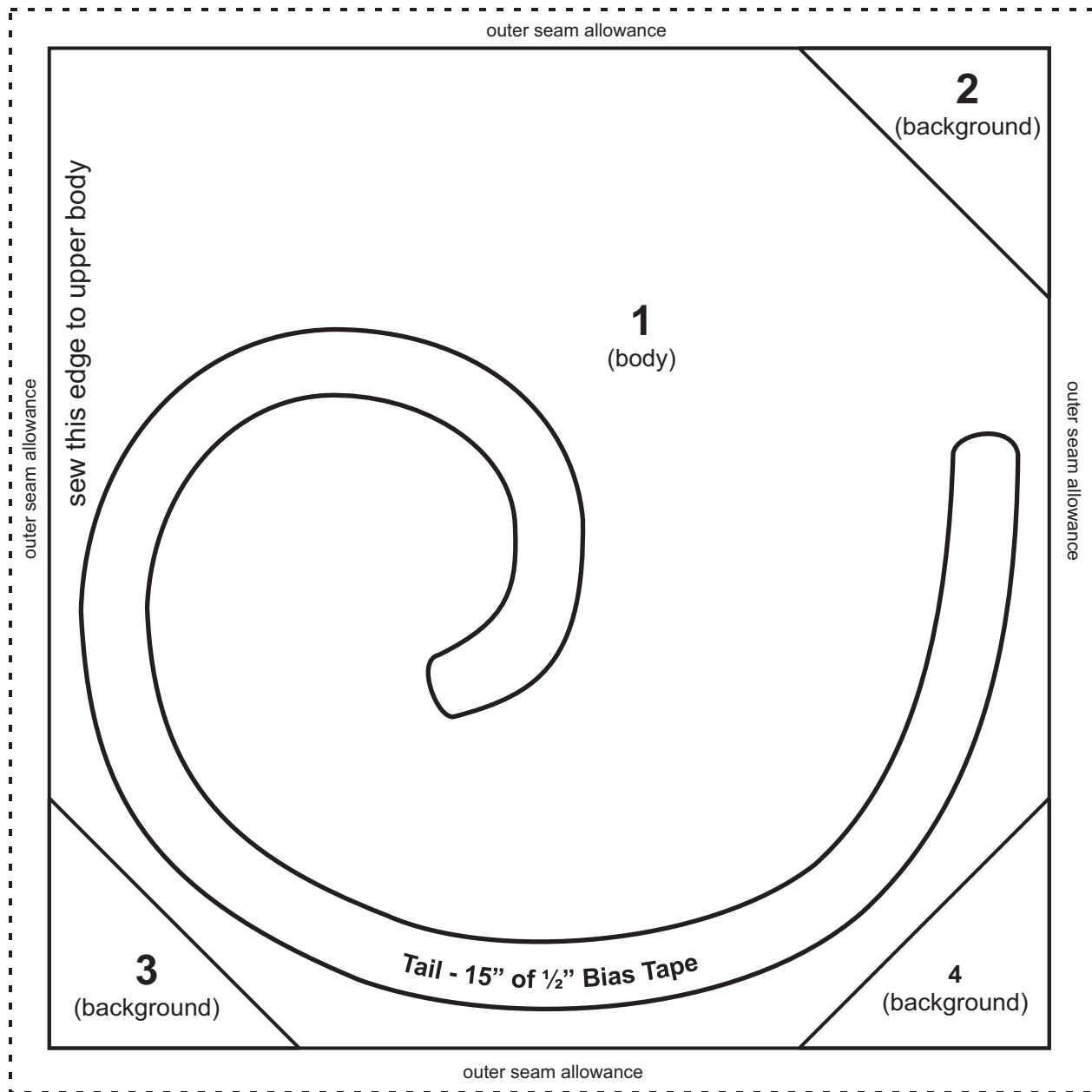
(6" unit - with pieced tail)



TIPS: Make sure there is adequate contrast between the body and the background. Cut and orient the background pieces carefully if it is a directional print. Also make sure there is adequate contrast between the tail and body fabrics so the tail remains visible in the finished block; a striped fabric for the tail would be a nice choice.

Pieceful Cat #1B Hind Quarters

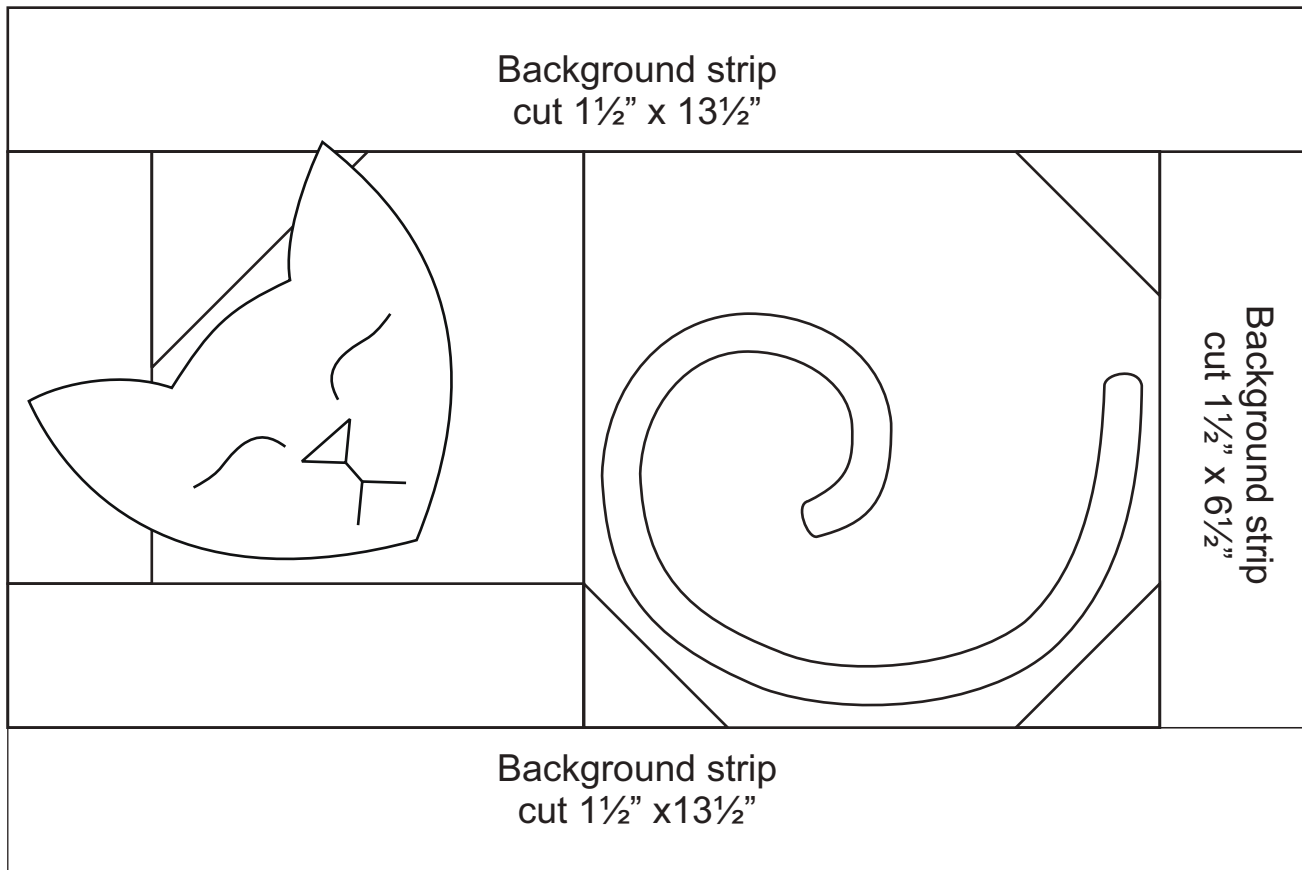
(6" unit - with applied tail)



TIPS: Make sure there is adequate contrast between the body and the background. Cut and orient the background pieces carefully if it is a directional print. Also make sure there is adequate contrast between the tail and body fabrics so the tail remains visible in the finished block; a striped fabric for the tail would be a nice choice and yield a candy-striped tail. Position and stitch or fuse the bias tail carefully to ease in any puckers or tucks gracefully.

Pieceful Cats

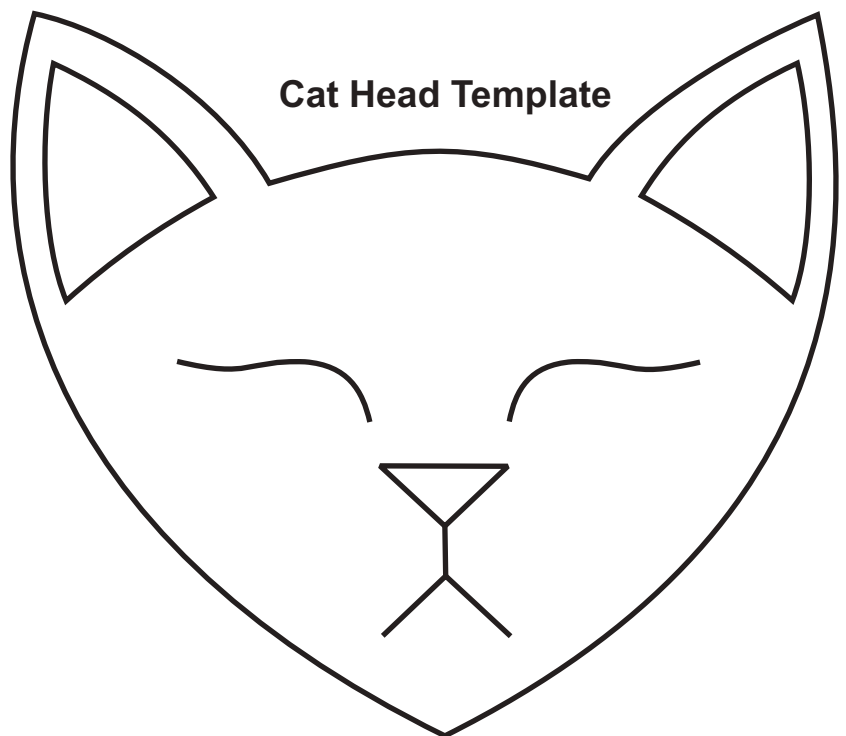
Block #1 - Final Assembly



After sewing the two body units together, add remaining background strips as shown in diagram above, press the seams toward outer edges of the block. Add borders if desired.

Applique the head and facial features from the template shown at right. Eyes and mouth (and possibly nose) can be added with hand embroidery before layering and quilting or add as part of the quilting after block/quilt has been layered.

Quilting suggestions: Quilt in the ditch around all the cat body parts adding a swirly or 'furry' texture to the main body. you may quilt some whiskers if desired. Background can be quilted in an all over stipple.



Pieceful Cats

Block #1

This pattern is composed of two units that are foundation paper pieced and then are joined to make the block. With the exception of the ears and nose (and tail on View B), the units are entirely pieced. If foundation paper piecing is not your favorite technique the block can be assembled in a traditional piecing fashion making templates for the pieces.

The construction of this block will be quite easy for someone with basic sewing skills.

Fabric Requirements: For one block unless otherwise noted

Background: A fat Quarter (NOTE: you will be able to get two to three blocks from a fat quarter depending on how you cut and whether the fabric is directional)

Cat Body: 8" x 15"

Tail: 7" square (for pieced tail) OR a Fat Quarter or 13" square (for the bias applique tail)

Cat Head: 6" square

Nose and Inner Ears: Scraps will suffice

Borders and sashing will vary at the quilter's discretion

Other tools and incidentals you may need:

Foundation piecing Paper or Golden Threads™ Quilting paper (foundation piecing only)

An Add a Quarter™ 'foundation trimming ruler is nice for foundation piecing

Template Plastic (traditional piecing only)

Fusible web in brand of choice

Hand applique needle and thread (for hand applique only)

Clover 1/2" bias tape tool

Quilter's Pencil to mark face details

Embroidery floss (optional) for hand embroidered face details

Please read all directions and review the patterns before starting the project

When printing the patterns, make sure your Acrobat Reader is set to print the document at 100% and measure the printed blocks to make sure they are accurate, they should measure 6" square without the perimeter seam allowance.



Helene Knott

helene.m.knott@gmail.com
PO Box 261 • Oregon City • OR 97045
503 631-8806 www.heleneknott.com